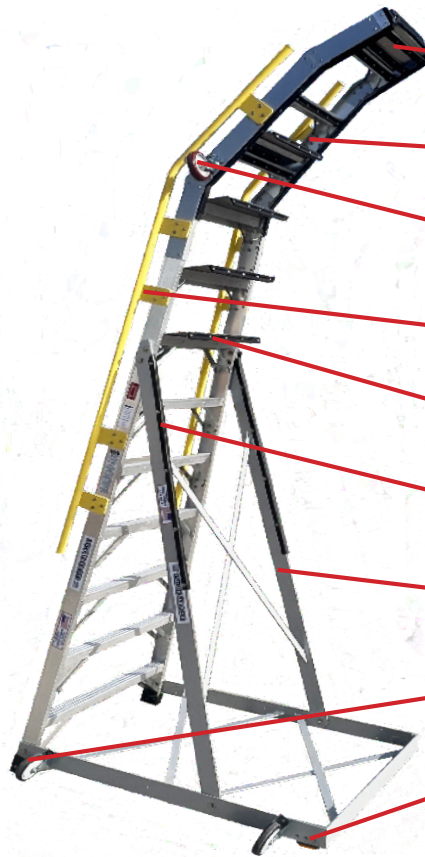


# LOCKNCLIMB®

## 12COWLPYLON FOR PYLON PANEL SERVICE ON A321NEO, A320, A319



*12COWLPYLON rolls easily on hard rubber wheels and slides in place on brass feet to allow safer working access to the service panels on top of the engine pylon area.*



- ☐ Fixed tool tray at top rung
- ☐ Rubber padding
- ☐ Extra wheel for rolling
- ☐ Yellow safety handrails
- ☐ Extra wide comfort treads
- ☐ Rubber padding
- ☐ Rolling fixed base frame
- ☐ Hard rubber wheels
- ☐ Replaceable brass feet

### Specifications

12' aluminum two-section ladder, OSHA rated 300-lb. Special Purpose, 144" H, 34" W, 111LBS. • Meets ANSI specifications. • Patented 6061-grade aluminum support base and frame. • (3) Commercial grade hard rubber wheels. • Yellow safety handrails on each side of ladder rails. • Rubber padding on back rails and treads protects aircraft surfaces from damage. • Folding tool tray on top rung. • (4) LockNStands provide durable comfortable for extended standing. • Equipped with replaceable brass feet to allow easier sliding on concrete and/or apron surfaces. • Stickers indicate OSHA/ANSI compliance. Made in the USA.

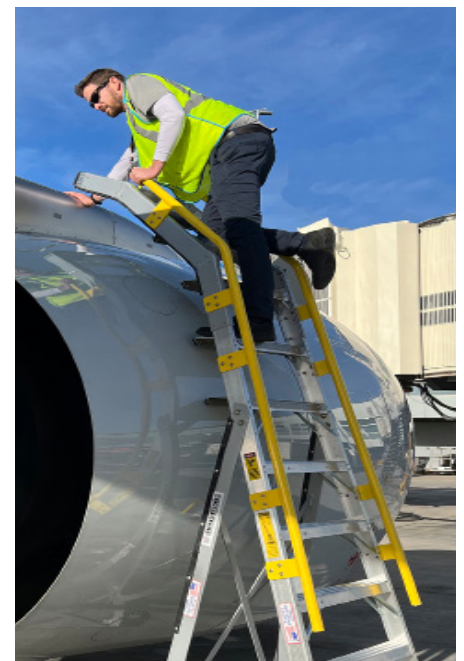
*"Ladders designed by technicians,  
for use by technicians."*



Made one at a time by skilled craftsmen in the U.S.A.



*Built in TOOL TRAY at the top of the ladder facilitates quick repairs and maintenance tasks as tools and parts are staged next to the work area.*



Manufactured by LockNClimb, LLC • 2500 West Laurel Street  
Independence, KS 67301 • (620) 577-2577